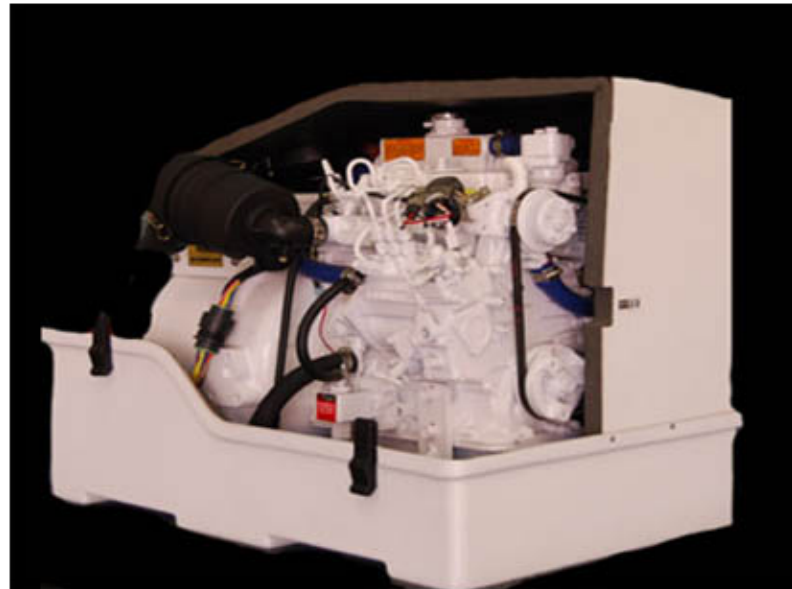


Standard Features

- Kubota Diesel Engine
- Single Bearing Direct Coupled Generator
- Low 1,800 RPM Operating Speed
- Safety Shutdown System for High Coolant Temperature or Low Lube Oil Pressure
- Single Series Circuit Control System with No Printed Circuit Boards – Tinned Wiring
- Fresh Water Double Pass Heat Exchanger
- Water Cooled Exhaust Manifold with Removable Integral Cupro-Nickel Heat Exchanger Core
- Zinc Anode in Heat Exchanger
- Stainless Steel Exhaust Elbow Cast
- Gear Driven Raw Water Pump
- Four Point Isolation Mounts S/S
- Molded Blue Silicone Water Hoses with Stainless Steel AWAB Clamps
- Air Intake Cleaner / Silencer
- Main Line Circuit Breaker
- Spin-On Lube / Fuel Filters
- RACOR Fuel / Water Separator
- Secondary 5 Micron Fuel Filter
- Self Bleed Fuel System
- USCG Approved Fuel Lines
- Electric Fuel Transfer Pump
- Forged Brass Oil Drain Valve with Safety Lock
- Awl-Craft 2000 Urethane Finish
- 5 Year Limited Warranty
- Belt Guard

K3-7.0KW PMG



Specifications

- Kubota Model D902-E3B
- Number of Cylinders 3
- Cubic Inch Displacement 54.8
- Bore x Stroke 2.83" x 2.90"
- Dimensions (LxWxH) 26.23" x 18" x 22.5" Specs w/o enclosure
- Weight (lbs.) 344
- Output (volts) 120 Volt Only
- Output (amps) 58/29
- Output (watts) 7,000
- Exhaust Dia. 2.0"
- Raw Water Dia. 3/4"
- Fuel Line Dia. 5/16"
- Return Line Dia. 3/16"

Optional Equipment

- Custom Remote Engine / Generator Instrument Panels
- Stainless Steel Drip Pan
- Custom Front PTO Pulleys
- 24 Volt Starting System
- Sound Insulation Blanket
- Sound Attenuated Enclosure
- Powder Coated Aluminum
- Remote Oil Filter Kits
- Custom Chrome Packages
- Spare Parts Kit

2880 Hammondville Road
 Pompano Beach, FL 33069
 Tel: (954) 979-5899
 Fax: (954) 979-4349

900 Industrial Park Road #10
 Deep River, CT 06417
 Tel: (860) 526-9773
 Fax: (860) 526-2090

Phasormarine.com

